

# TAN AIR PNEUMATICS

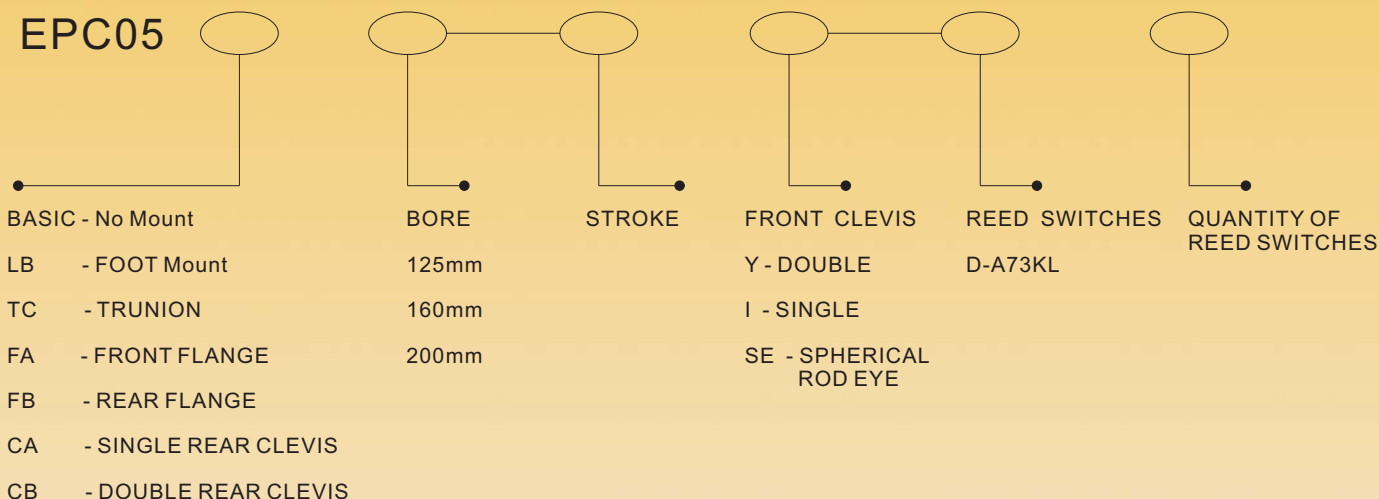
## EPC05 ISO LARGE BORE CYLINDERS

### ORDERING GUIDE

#### HOW TO ORDER

#### ISO6431/VDMA

#### EPC05



PRESSURE RATING = 10BAR  
 TEMPERATURE = -20°C ~ +80°C

LOWER OR HIGHER TEMPERATURE  
 VERSIONS AVAILBALE

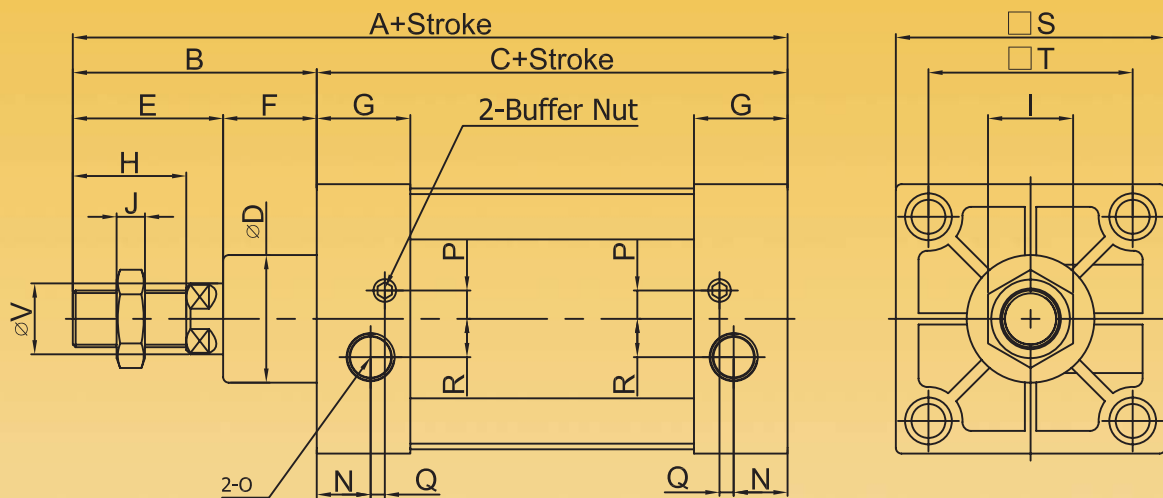
SEE EASTERN PNEUMATICS AND HYDRAULICS  
 FOR MORE SPECIFICATIONS

#### Main Parts Materials

Cylinder Bore	32 40 50 63 80 100	Cylinder Bore	32 40 50 63 80 100
Cylinder Body	Hard Anodized, Aluminum Lightweight Cylinder Body	O ring, Anti-leakage seal	NBR
Piston	Aluminum Alloy	Wear Ring	TEFLON
Piston Rod	Hard Chrome Plated Carben Steel	Self Lubricating Bearing	TEFLON
Head Cap Seal	NBR	Head Cap	Black Anolized Aluminum Alloy Blocks
Rod/Wiper Seal	NBR	End Cap	Black Anolized Aluminum Alloy Blocks
O ring/Buffer body seal	NBR	Magnet	Plastic Coated Magnetic Material
O ring/Piston Seal	NBR	Buffer	Broze
O ring/Cylinder Body End seal	NBR	Buffer	Medium Carbon Steel
O ring/Buffer	NBR	Buffer Screw	Brass

# TAN AIR PNEUMATICS

## EPC05 ISO CYLINDER BASIC TYPE



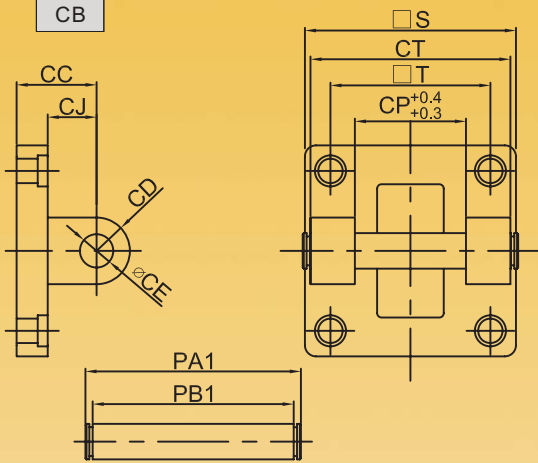
Bore	A	B	C	D	E	F	G	H	I	J	L
32	142	48	94	30	30	18	27.5	22	17	6	M6
40	159	54	105	35	34	20	32	24	19	7	M6
50	175	69	106	40	42	27	31	32	24	8	M8
63	190	69	121	45	40	29	33	32	24	8	M8
80	214	86	128	45	53	33	33	40	30	10	M10
100	229	91	138	55	55	36	37	40	30	10	M10
125	279	119	160	60	74	45	46	54	41	13.5	M12
160	332	152	180	65	94	58	50	72	55	18	M16
180	347	167	180	75	100	67	50	72	55	18	M16

Bore	K	N	O	P	Q	R	S	T	V	W
32	M10×1.25	13.5	PT1/8	4	7.5	7	47	32.5	12	10
40	M12×1.25	16	PT1/4	6	9.5	9	53	38	16	13
50	M16×1.5	18.5	PT1/4	8.5	6.7	9	65	46.5	20	17
63	M16×1.5	19	PT3/8	6	7.7	9	75	56.5	20	17
80	M20×1.5	19	PT3/8	10	5	13.5	95	72	25	22
100	M20×1.5	18	PT1/2	12.5	10	14.5	115	89	25	22
125	M27×2	23	PT1/2	14	12	14	140	110	32	27
160	M36×2	25	PT3/4	15	12	20	180	140	40	36
180	M36×2	25	PT3/4	15	12	20	220	175	40	36

# TAN AIR PNEUMATICS

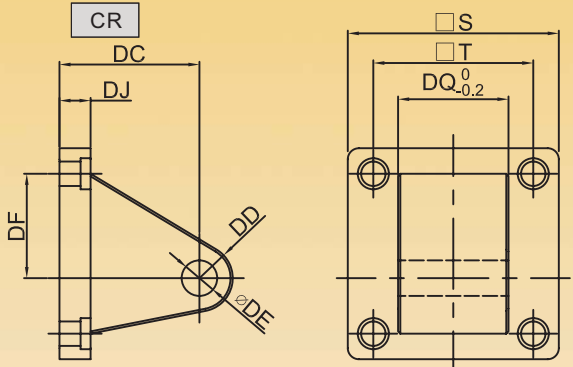
## EPC05 ISO CYLINDER MOUNT OPTIONS

CB



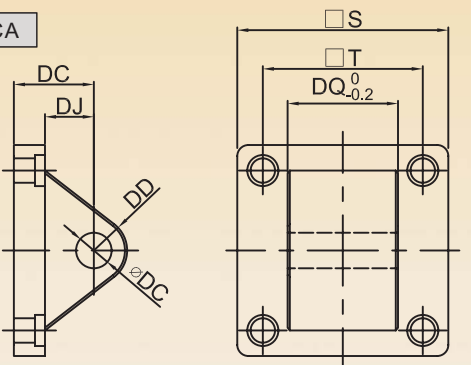
BORE		32	40	50	63	80	100	125	160	200
CC	Metric	22	25	27	32	36	41	50	55	60
	Inch	0.87	0.98	1.06	1.26	1.42	1.61	1.97	2.17	2.36
CD	Metric	9	12	12	15	15	20	25	30	30
	Inch	0.35	0.47	0.47	0.59	0.59	0.79	0.98	1.18	1.18
CE	Metric	10	12	12	16	16	20	25	30	30
	Inch	0.39	0.47	0.47	0.63	0.63	0.79	0.98	1.18	1.18
CJ	Metric	13	16	17	22	22	27	31	35.5	36
	Inch	0.51	0.63	0.67	0.87	0.87	1.06	1.22	1.40	1.42
CP	Metric	26	28	32	40	50	60	70	90	90
	Inch	1.02	1.10	1.26	1.57	1.97	2.36	2.76	3.54	3.54
CT	Metric	45	52	60	70	90	110	130	170	170
	Inch	1.77	2.05	2.36	2.76	3.54	4.33	5.12	6.69	6.69
PA1	Metric	51	59	67	77	97	119	139	181	181
	Inch	2.01	2.32	2.64	3.03	3.82	4.69	5.47	7.13	7.13
PB1	Metric	45.5	52.5	60.5	70.5	90.5	110.5	130.5	170.5	170.5
	Inch	1.79	2.07	2.38	2.78	3.56	4.35	5.14	6.71	6.71
S	Metric	47	53	65	75	95	115	140	180	220
	Inch	1.85	2.09	2.56	2.95	3.74	4.53	5.51	7.09	8.66
T	Metric	32.5	38	46.5	56.5	72	89	110	140	175
	Inch	1.28	1.50	1.83	2.22	2.83	3.50	4.33	5.51	6.89

CR



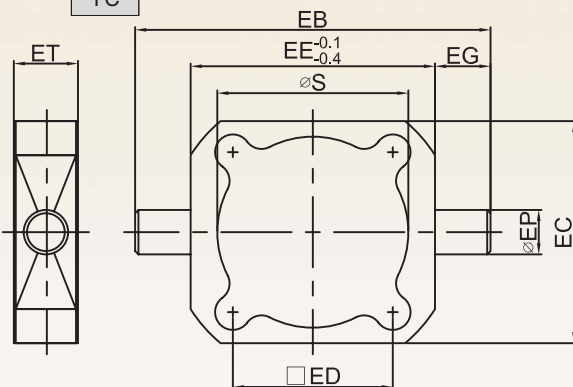
BORE		32	40	50	63	80	100	125	160	200
DC	Metric	32	36	45	50	63	70	90	115	135
	Inch	1.26	1.42	1.77	1.97	2.48	2.76	3.54	4.53	5.31
DD	Metric	10	11	13	15	15	19	22	31	31
	Inch	0.39	0.43	0.51	0.59	0.59	0.75	0.87	1.22	1.22
DE	Metric	10	12	12	16	16	20	25	30	30
	Inch	0.39	0.47	0.47	0.63	0.63	0.79	0.98	1.18	1.18
DF	Metric	21	24	33	37	47	55	70	97	105
	Inch	0.83	0.94	1.30	1.46	1.85	2.17	2.76	3.82	4.13
DJ	Metric	8	10	12	12	14	15	20	25	30
	Inch	0.31	0.39	0.47	0.47	0.55	0.59	0.79	0.98	1.18
DQ	Metric	25.8	27.8	31.7	39.7	49.7	59.7	69.7	89.7	89.7
	Inch	1.02	1.09	1.25	1.56	1.96	2.35	2.74	3.53	3.53
S	Metric	47	53	65	75	95	115	140	180	220
	Inch	1.85	2.09	2.56	2.95	3.74	4.53	5.51	7.09	8.66
T	Metric	32.5	38	46.5	56.5	72	89	110	140	175
	Inch	1.28	1.50	1.83	2.22	2.83	3.50	4.33	5.51	6.89

CA



BORE		32	40	50	63	80	100	125	160	200
DC	Metric	22	25	27	32	36	41	50	55	60
	Inch	0.87	0.98	1.06	1.26	1.42	1.61	1.97	2.17	2.36
DD	Metric	9	12	12	15	15	20	25	30	30
	Inch	0.35	0.47	0.47	0.59	0.59	0.79	0.98	1.18	1.18
DE	Metric	10	12	12	16	16	20	25	30	30
	Inch	0.39	0.47	0.47	0.63	0.63	0.79	0.98	1.18	1.18
DJ	Metric	13	16	17	22	22	27	31	35.5	36
	Inch	0.51	0.63	0.67	0.87	0.87	1.06	1.22	1.40	1.42
DQ	Metric	25.8	27.8	31.7	39.7	49.7	59.7	69.7	89.7	89.7
	Inch	1.02	1.09	1.25	1.56	1.96	2.35	2.74	3.53	3.53
S	Metric	47	53	65	75	95	115	140	180	220
	Inch	1.85	2.09	2.56	2.95	3.74	4.53	5.51	7.09	8.66
T	Metric	32.5	38	46.5	56.5	72	89	110	140	175
	Inch	1.28	1.50	1.83	2.22	2.83	3.50	4.33	5.51	6.89

TC

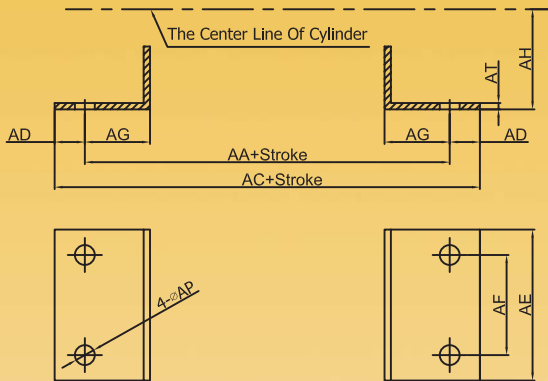


BORE		32	40	50	63	80	100	125	125	200
EB	Metric	100	113	125	140	160	182	-	-	-
	Inch	3.94	4.45	4.92	5.51	6.30	7.17	-	-	-
EC	Metric	50	58	70	80	100	126	-	-	-
	Inch	1.97	2.28	2.76	3.15	3.94	4.96	-	-	-
ED	Metric	32.5	38	46.5	56.5	72	89	-	-	-
	Inch	1.28	1.50	1.83	2.22	2.83	3.50	-	-	-
EE	Metric	50	63	75	90	110	132	-	-	-
	Inch	1.97	2.48	2.95	3.54	4.33	5.20	-	-	-
EG	Metric	25	25	25	25	25	25	-	-	-
	Inch	0.98	0.98	0.98	0.98	0.98	0.98	-	-	-
EP	Metric	12	16	16	20	20	25	-	-	-
	Inch	0.47	0.63	0.63	0.79	0.79	0.98	-	-	-
ET	Metric	20	24	28	28	28	28	-	-	-
	Inch	0.79	0.94	1.10	1.10	1.10	1.10	-	-	-
S	Metric	36	45	55	68	86	106	-	-	-
	Inch	1.42	1.77	2.17	2.68	3.39	4.17	-	-	-

# TAN AIR PNEUMATICS

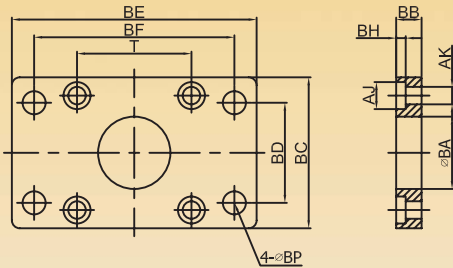
## EPC05 ISO CYLINDER MOUNT OPTIONS

LB



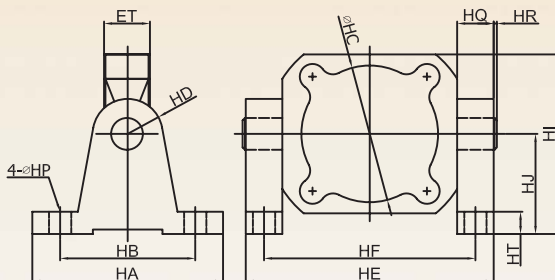
BORE		32	40	50	63	80	100	125	160	200
AC	Metric	158	179	190	209	248	258	290	340	380
	Inch	6.22	7.05	7.48	8.23	9.76	10.16	11.42	13.39	14.96
AA	Metric	142	161	170	185	210	220	250	300	320
	Inch	5.59	6.34	6.69	7.29	8.27	8.66	10.84	11.81	12.60
AD	Metric	8	9	10	12	19	19	20	20	30
	Inch	0.31	0.35	0.39	0.47	0.75	0.75	0.79	0.79	1.18
AE	Metric	47	53	63	75	95	115	140	180	220
	Inch	1.85	2.09	2.48	2.95	3.74	4.53	5.51	7.09	8.66
AF	Metric	32	36	45	50	63	75	90	115	135
	Inch	1.26	1.42	1.77	1.97	2.48	2.95	3.54	4.53	5.31
AG	Metric	24	28	32	32	41	45	45	60	70
	Inch	0.94	1.10	1.26	1.26	1.61	1.77	1.77	2.36	2.76
AH	Metric	32	36	45	50	63	71	90	115	135
	Inch	1.26	1.42	1.77	1.97	2.48	2.80	3.54	4.53	5.31
AP	Metric	7	9	9	9	12.5	14.5	16.5	18.5	24
	Inch	0.28	0.35	0.35	0.35	0.49	0.57	0.65	0.73	0.94
AT	Metric	3	3	3	3	4	4	8	8	9
	Inch	0.12	0.12	0.12	0.12	0.16	0.16	0.31	0.31	0.35

FA&FB



BORE		32	40	50	63	80	100	125	160	200
AJ	Metric	11	11	13	13	17	17	19	24.5	25
	Inch	0.43	0.43	0.51	0.51	0.67	0.67	0.75	0.96	0.98
AK	Metric	7	7	9	9	11	11	13	16.75	17
	Inch	0.28	0.28	0.35	0.35	0.43	0.43	0.51	0.66	0.67
BA	Metric	30.5	35.5	40.5	45.5	45.5	55.5	60.5	65.5	75.5
	Inch	1.20	1.40	1.59	1.79	1.79	2.19	2.38	2.58	2.97
BB	Metric	10	10	12	12	16	16	20	20	25
	Inch	0.39	0.39	0.47	0.47	0.63	0.63	0.79	0.79	0.98
BC	Metric	47	53	65	75	95	115	140	180	220
	Inch	1.85	2.09	2.56	2.95	3.74	4.53	5.51	7.09	8.66
BE	Metric	80	90	110	125	154	186	224	280	320
	Inch	3.15	3.54	4.33	4.92	6.06	7.32	8.82	11.02	12.60
BD	Metric	32	36	45	50	63	71	90	115	135
	Inch	1.26	1.42	1.77	1.97	2.48	2.80	3.54	4.53	5.31
BP	Metric	7	9	9	9	12.5	14.5	16.5	18.5	24
	Inch	0.28	0.35	0.35	0.35	0.49	0.57	0.65	0.73	0.94
BF	Metric	64	72	90	100	126	150	180	230	270
	Inch	2.52	2.83	3.54	3.94	4.96	5.91	7.09	9.06	10.63
BH	Metric	4	4	6	6	6	6	8	8	12
	Inch	0.16	0.16	0.24	0.16	0.24	0.24	0.31	0.31	0.47
T	Metric	32.5	38	46.5	56.5	72	89	110	140	175
	Inch	1.28	1.50	1.83	2.22	2.83	3.50	4.33	5.51	6.89

TC-M

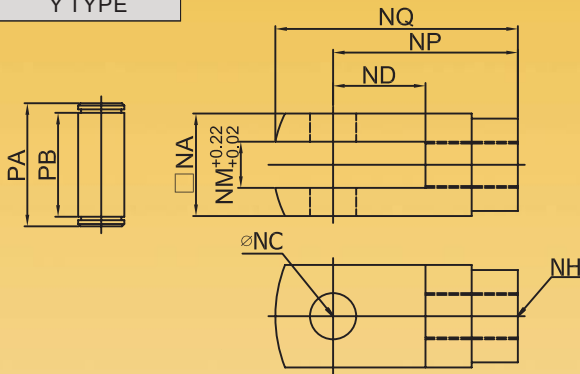


BORE		32	40	50	63	80	100	125	160	200
HA	Metric	110	110	110	120	120	120	-	-	-
	Inch	4.33	4.33	4.33	4.72	4.72	4.72	-	-	-
HB	Metric	80	80	80	80	85	85	-	-	-
	Inch	3.15	3.15	3.15	3.15	3.35	3.35	-	-	-
HC	Metric	36	45	55	58	86	106	-	-	-
	Inch	1.42	1.77	2.17	2.28	3.39	4.17	-	-	-
HD	Metric	22	22	22	22	22	22	-	-	-
	Inch	0.87	0.87	0.87	0.87	0.87	0.87	-	-	-
HE	Metric	96	109	121	136	156	178	-	-	-
	Inch	3.78	4.29	4.76	5.35	6.14	7.01	-	-	-
HF	Metric	73	86	98	113	133	155	-	-	-
	Inch	2.87	3.39	3.86	4.45	5.24	6.10	-	-	-
HJ	Metric	43.5	47.5	47	46	63	67	-	-	-
	Inch	1.71	1.87	1.85	1.81	2.48	2.64	-	-	-
HI	Metric	68.5	76.5	82	86	113	130	-	-	-
	Inch	2.70	3.01	3.23	3.39	4.45	5.12	-	-	-
HQ	Metric	23	23	23	23	23	23	-	-	-
	Inch	0.91	0.91	0.91	0.91	0.91	0.91	-	-	-
HR	Metric	2	2	2	2	2	2	-	-	-
	Inch	0.08	0.08	0.08	0.08	0.08	0.08	-	-	-
HT	Metric	12	12	12	12	14	14	-	-	-
	Inch	0.47	0.47	0.47	0.47	0.55	0.55	-	-	-
HP	Metric	12	12	12	12	14	14	-	-	-
	Inch	0.47	0.47	0.47	0.47	0.55	0.55	-	-	-

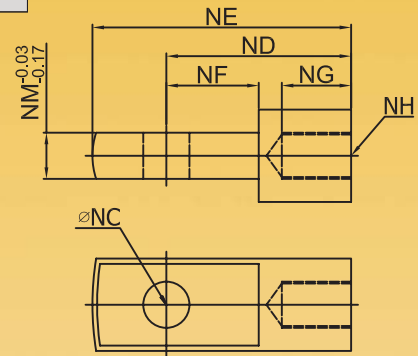
# TAN AIR PNEUMATICS

## EPC05 ISO CYLINDER MOUNT OPTIONS

Y TYPE

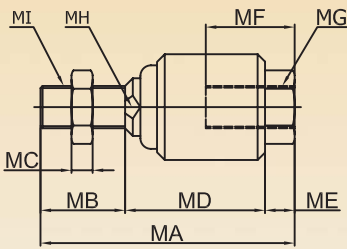


I TYPE



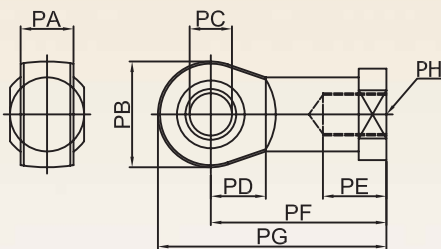
BORE	NA		NC		ND		NE		NF		NG		NH	NM		NP		NQ		PA		PB	
	Metric	Inch	Metric	Inch	Metric	Inch	Metric	Inch	Metric	Inch	Metric	Inch		Metric	Inch	Metric	Inch	Metric	Inch	Metric	Inch	Metric	Inch
32	19	0.75	10	0.39	40	1.57	52	2.05	15	0.59	20	0.79	M10×1.25	10	0.39	20	0.79	52	2.05	26.2	1.03	20	0.79
40	25.4	1.00	12	0.47	48	1.89	67	2.64	24	0.94	20	0.79	M12×1.25	12	0.47	24	0.94	62	2.44	32.8	1.29	26.5	1.04
50	32	1.26	16	0.63	64	2.52	89	3.50	32	1.26	23	0.91	M16×1.5	16	0.63	32	1.26	83	3.27	39.3	1.55	33	1.30
63	32	1.26	16	0.63	64	2.52	89	3.50	32	1.26	23	0.91	M16×1.5	16	0.63	32	1.26	83	3.27	39.3	1.55	33	1.30
80	44.4	1.75	20	0.79	80	3.15	112	4.41	40	1.57	30	1.18	M20×1.5	20	0.79	40	1.57	105	4.13	53.3	2.10	45	1.77
100	44.4	1.75	20	0.79	80	3.15	112	4.41	40	1.57	30	1.18	M20×1.5	20	0.79	40	1.57	105	4.13	53.3	2.10	45	1.77
125	55	2.17	30	1.18	110	4.33	155	6.10	50	1.97	56	2.20	M27×2.0	30	1.18	54	2.13	148	5.83	64	2.52	55.6	2.19
160	70	2.76	35	1.38	144	5.67	201	7.91	50	1.97	72	2.83	M36×2.0	35	1.38	72	2.83	191	7.52	80	3.15	70.6	2.78
200	70	2.76	35	1.38	144	5.67	201	7.91	55	2.17	72	2.83	M36×2.0	35	1.38	72	2.83	191	7.52	80	3.15	70.6	2.78

FLOATING TYPE



BORE	MA		MB		MC		MD		ME		MF		MG	MH		MI
	Metric	Inch	Metric	Inch	Metric	Inch	Metric	Inch	Metric	Inch	Metric	Inch		Metric	Inch	
32	73	2.87	20	0.79	6	0.24	45	1.77	8	0.31	26	1.02	M10×1.25	12	0.47	M10×1.25
40	77	3.03	24	0.94	7	0.28	46	1.81	7	0.28	26	1.02	M12×1.25	12	0.47	M12×1.25
50	106	4.17	32	1.26	8	0.31	62	2.44	12	0.47	34	1.34	M16×1.5	19	0.75	M16×1.5
63	106	4.17	32	1.26	8	0.31	62	2.44	12	0.47	34	1.34	M16×1.5	19	0.75	M16×1.5
80	122	4.80	40	1.57	10	0.39	68	2.68	14	0.55	42	1.65	M20×1.5	19	0.75	M20×1.5
100	122	4.80	40	1.57	10	0.39	68	2.68	14	0.55	42	1.65	M20×1.5	19	0.75	M20×1.5
125	147	5.79	54	2.13	13.5	0.53	77	3.03	16	0.63	40	1.57	M27×2.0	24	0.94	M27×2.0
160	251	9.88	72	2.83	18	0.71	161	6.34	18	0.71	78	3.07	M36×2.0	36	1.42	M36×2.0
200	251	9.88	72	2.83	18	0.71	161	6.34	18	0.71	78	3.07	M36×2.0	36	1.42	M36×2.0

BEARING TYPE



BORE	PA		PB		PC		PD		PE		PF		PG		PH
	Metric	Inch	Metric	Inch	Metric	Inch	Metric	Inch	Metric	Inch	Metric	Inch	Metric	Inch	
32	14	0.55	28	1.10	10	0.39	15	0.59	20	0.79	43	1.69	57	2.24	M10×1.25
40	16	0.63	32	1.26	12	0.47	17	0.67	22	0.87	50	1.97	66	2.60	M12×1.25
50	21	0.83	42	1.65	16	0.63	22	0.87	28	1.10	64	2.52	85	3.35	M16×1.5
63	21	0.83	42	1.65	16	0.63	22	0.87	28	1.10	64	2.52	85	3.35	M16×1.5
80	25	0.98	50	1.97	20	0.79	26	1.02	33	1.30	77	3.03	102	4.02	M20×1.5
100	25	0.98	50	1.97	20	0.79	26	1.02	33	1.30	77	3.03	102	4.02	M20×1.5
125	37	1.46	70	2.76	30	1.18	36	1.42	51	2.01	110	4.33	145	5.71	M27×2.0
160	43	1.69	80	3.15	35	1.38	41	1.61	56	2.20	125	4.92	165	6.50	M36×2.0
200	43	1.69	80	3.15	35	1.38	41	1.61	56	2.20	125	4.92	165	6.50	M36×2.0