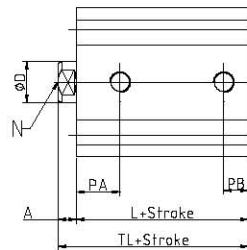
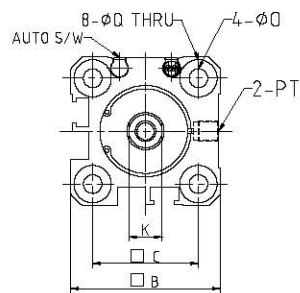


# TANAI R PNEUMATICS

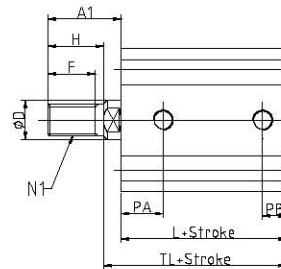
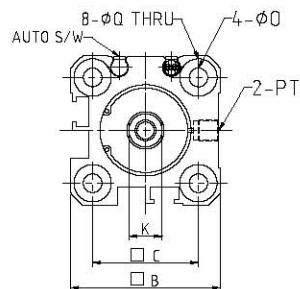
## TPCDQ2 ( MAGNETIC ) COMPACT CYLINDER DOUBLE ACTING TYPE

### STANDARD / DOUBLE: ACTING TYPE

Female screw:  $\phi 12 \sim \phi 25$



Male screw:  $\phi 12 \sim \phi 25$

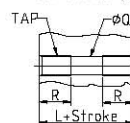


unit: mm

model	stroke(mm)	A	A1	□B	□C	∅D	F	H	K	L	N	N1	∅O	PA	PT
TPCDQ2B-12	5~30	3.5	14	25	19.5	6	9	10.5	5	28.5	M3X0.5 DP6	M5X0.8	3.5	10	M5X0.8
TPCDQ2B-16	5~30	3.5	15.5	29	20	8	10	12	8	30.5	M4X0.7 DP8	M6X1.0	3.5	10	M5X0.8
TPCDQ2B-20	5~50	4.5	18.5	36	25.5	10	12	14	8	31.5	M5X0.8 DP8	M8X1.25	6	10.5	M5X0.8
TPCDQ2B-25	5~50	5	22.5	40	28	12	15	17.5	10	32.5	M6X1.0 DP12	M10X1.25	5.5	11	M5X0.8

model	PB	∅Q	TL
TPCDQ2B-12	5.5	6.5 Dp3.5	31.5
TPCDQ2B-16	5.5	6.5 Dp3.5	34
TPCDQ2B-20	5.5	9 Dp7	36
TPCDQ2B-25	5.5	9 Dp7	37.5

Both-end lap Type



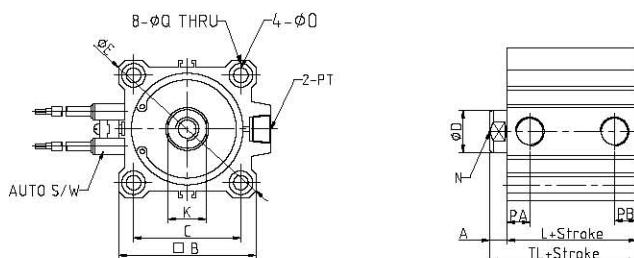
stroke(mm)	TAP	R
12	M4X0.7	7
16	M4X0.7	7
20	M6X1.0	10
25	M6X1.0	10

# TANAIR PNEUMATICS

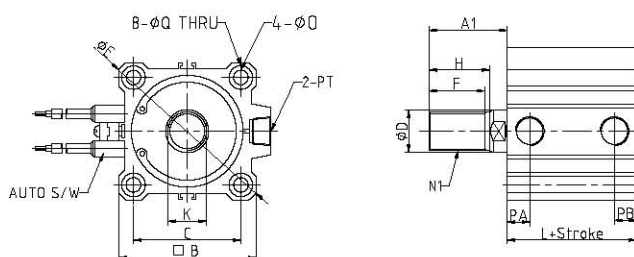
## TPCDQ2 ( MAGNETIC ) COMPACT CYLINDER DOUBLE ACTING TYPE

### STANDARD / DOUBLE ACTING TYPE: SINGLE ROD TYPE

Female screw:  $\phi 32 \sim \phi 100$



Male screw:  $\phi 32 \sim \phi 100$



unit:mm

model	stroke(mm)	A	A1	□B	□C	∅D	∅E	F	H	K	L	N	N1	∅O	PA	PB
TPCDQ2B-32	5~100	7	28.5	45	34	16	80	20.5	23.5	14	33	M8X1.25 DP13	M14X1.5	5.5	10.5	7.5
TPCDQ2B-40	5~100	7	28.5	52	40	16	69	20.5	23.5	14	39.5	M8X1.25 DP13	M14X1.5	5.5	12	8.5
TPCDQ2B-50	10~100	8	33.5	64	50	20	66	26	28.5	18	40.5	M10X1.5 DP15	M18X1.5	6.8	10.5	10.5
TPCDQ2B-63	10~100	8	33.5	77	60	20	103	26	28.5	18	46	M10X1.5 DP15	M18X1.5	9	15	11
TPCDQ2B-80	10~100	10	43.5	98	77	25	132	32.5	35.5	22	53.5	M18X2.0 DP21	M22X1.5	11	18	12.5
TPCDQ2B-100	10~100	12	43.5	117	94	30	156	32.5	35.5	27	63	M20X2.5 DP27	M26X1.5	11	23	13

model	PT	∅Q	TL
TPCDQ2B-32	PT 1/8	9 Dp7	40
TPCDQ2B-40	PT 1/8	9 Dp7	46.5
TPCDQ2B-50	PT 1/4	11 Dp8	48.5
TPCDQ2B-63	PT 1/4	14 Dp10.5	54
TPCDQ2B-80	PT 3/8	17.5 Dp13.5	63.5
TPCDQ2B-100	PT 3/8	17.5 Dp13.5	75

stroke(mm)	Both-end tap Type	
	TAP	R
32	M6X1.0	10
40	M6X1.0	10
50	M8X1.25	14
63	M10X1.5	18
80	M12X1.75	22
100	M12X1.75	22