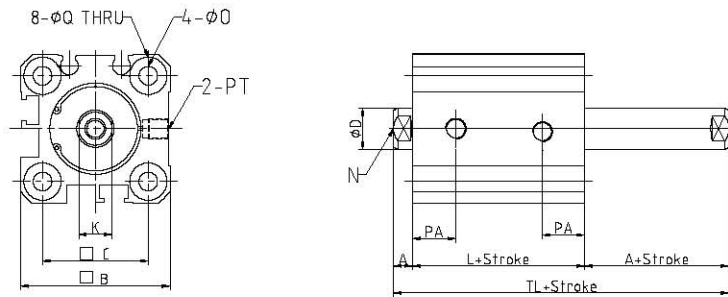


TANAIR PNEUMATICS

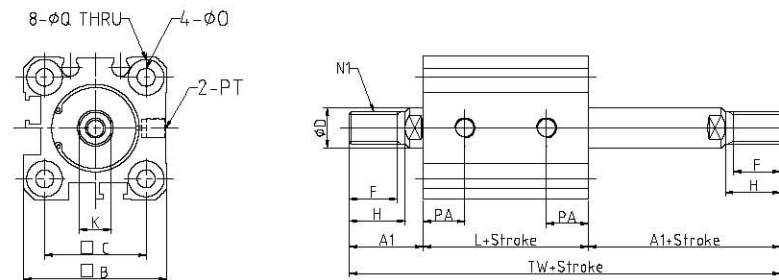
TPCQ2 (NON MAGNETIC) COMPACT CYLINDER DOUBLE ACTING TYPE

STANDARD / DOUBLE ACTING TYPE: DOUBLE ROD

Female screw: $\phi 20 \sim \phi 25$



Male screw: $\phi 20 \sim \phi 25$

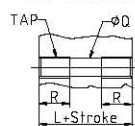


unit:mm

model	stroke(mm)	A	A1	□	□C	∅D	F	H	K	L	N	N1	∅D	PA	PT
TPCQ2B20	5-50	4.5	18.5	36	25.5	10	12	14	8	26	M5X0.8 DP7	M8X1.25	5.5	10.5	M5X0.8
TPCQ2B25	5-50	5	22.5	40	28	12	15	17.5	10	29	M6X1.0 DP12	M10X1.25	5.5	11	M5X0.8

model	∅Q	TL	TW
TPCQ2B20	9 Dp7	35	63
TPCQ2B25	8 Dp7	39	74

Both-end tap Type



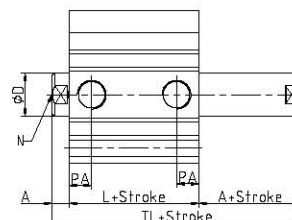
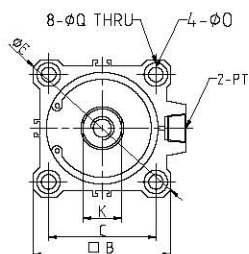
stroke(mm)	TAP	R
20	M6X1.0	10
25	M6X1.0	10

TANAI R PNEUMATICS

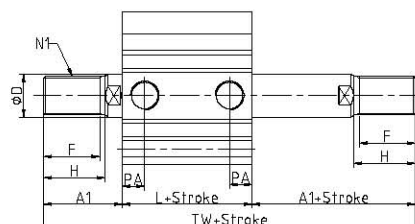
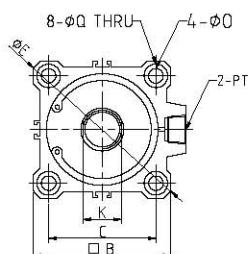
TPCQ2 (NON MAGNETIC) COMPACT CYLINDER DOUBLE ACTING TYPE

STANDARD / DOUBLE ACTING TYPE: DOUBLE ROD

Female screw: $\phi 32 \sim \phi 100$



Male screw: $\phi 32 \sim \phi 100$



unit:mm

model	stroke(mm)	A	A1	□B	□C	φD	φE	F	H	K	L	N	N1	φO	PT
TPCQ2B32	5	7	28.5	45	34	16	60	20.5	23.5	14	30.5	M8X1.25 DP13	M14X1.5	5.5	M5X0.8
	10~100														PT1/8
TPCQ2B40	5~100	7	28.5	52	40	16	69	20.5	23.5	14	40	M8X1.25 DP13	M14X1.5	5.5	PT1/8
TPCQ2B50	10~100	8	33.5	64	50	20	86	26	28.5	18	40.5	M10X1.5 DP15	M18X1.5	6.8	PT1/4
TPCQ2B63	10~100	8	33.5	77	60	20	103	26	28.5	18	42	M10X1.5 DP15	M18X1.5	9	PT1/4
TPCQ2B80	10~100	10	43.5	98	77	25	132	32.5	35.5	22	51	M16X2.0 DP21	M22X1.5	11	PT3/8
TPCQ2B100	10~100	12	43.5	117	94	30	156	32.5	35.5	27	60.5	M20X2.5 DP27	M28X1.5	11	PT3/8

model	PA	φQ	TL	TW
TPCQ2A32	11.5	9 Dp7	44.5	87.5
	10.5			
TPCQ2A40	12	9 Dp7	54	97
TPCQ2A50	10.5	11 Dp8	56.5	107.5
TPCQ2A63	15	14 Dp10.5	58	109
TPCQ2A80	18	17.5 Dp13.5	71	138
TPCQ2A100	23	17.5 Dp13.5	84.5	147.5

Both-end tap Type	stroke(mm)	TAP	R
	32	M6X1.0	10
	40	M6X1.0	10
	50	M8X1.25	14
	63	M10X1.50	18
	80	M12X1.75	22
	100	M12X1.75	22

TANAIR PNEUMATICS

TPCQ2 (NON MAGNETIC) COMPACT CYLINDER VARIABLE STROKE CYLINDER TYPE / CONTROL TYPE OF FORWARD MOTION SJ

0-50mm

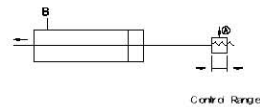
A: Range of stroke control 0-25 mm/m
B: Range of stroke control 0-50 mm/m

In case of forward motion of cylinder, can have a variable control to 0-50 mm from former stroke.
Install stroke controlling equipment to Head side and control stroke and output

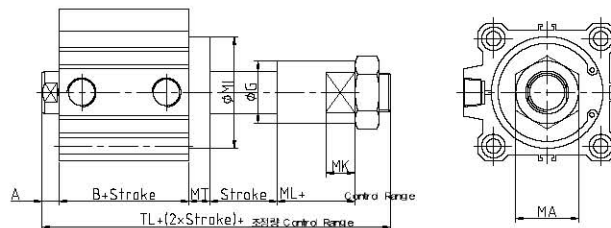
SPECIFICATION

type	Air pressure (no oil supply) type
Inside diameter of tube	Ø20, Ø25, Ø32, Ø40, Ø50, Ø63, Ø80, Ø100
working type	double-acting
Working Oil	air
Stroke Control	STOPER control
Range of stroke control	0-50mm
mounted type	Hole penetration type
Min. set pressure	0.5kgf/cm ²
Cushion	none

INDICATION NOTATION



■ Ø20~Ø100



unit : mm

Inside diameter of tube	A	B	TL	MT	MI	MA	MK	ØG	ML
20	4.5	26	61	8	□36	17	10	20	12.5
25	5	29	64.5	8	□40	17	10	20	12.5
32	7	30.5	72.5	6	Ø38	24	14	27	16
40	7	40	82	6	Ø46	24	14	27	16
50	8	40.5	91.5	8	Ø57	30	16	35	20
63	8	42	95	10	Ø68	30	16	35	20
80	12	51	119	12	Ø90	41	20	48	28
100	12	60.5	134.5	14	Ø100	41	20	48	28